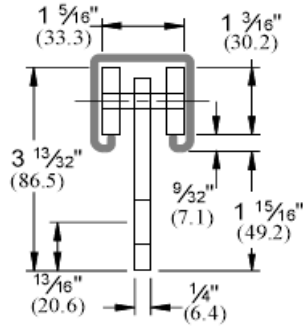
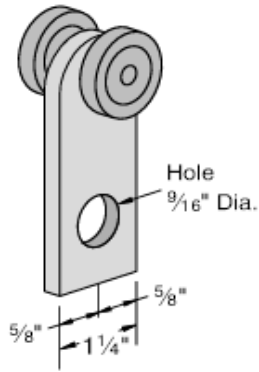




STRUT TROLLEY

P700 - Two Wheel Trolley



Material: Carbon Steel Wheels have stainless steel ball Bearings

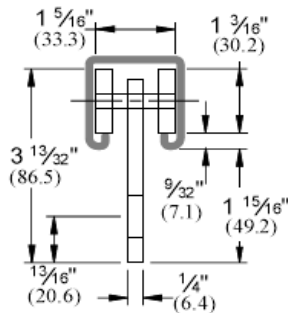
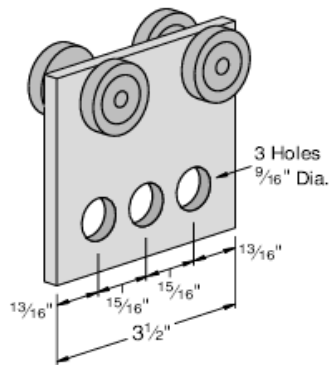
Finishing: Electro-Galvanized

Load Rating: 300Lbs

Weight/100 pcs: 46 lbs

| FPM | RPM | Design Load In PS 200 Lbs |
|-----|-----|---------------------------|
| 180 | 600 | 150 |
| 90 | 300 | 225 |
| 30 | 100 | 437 |

P710 - Four Wheel Trolley



Material: Carbon Steel Wheels have stainless steel ball Bearings

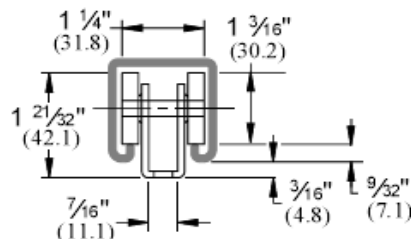
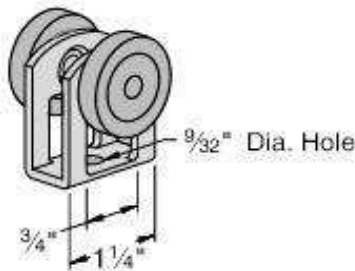
Finishing: Electro-Galvanized

Load Rating: 600 lbs

Weight/100 pcs: 110 lbs

| FPM | RPM | Design Load In PS 200 Lbs |
|-----|-----|---------------------------|
| 180 | 600 | 300 |
| 90 | 300 | 450 |
| 30 | 100 | 600 |

P720 - Two Bearing Light Duty Trolley



Material: Carbon Steel Wheels have stainless steel ball Bearings

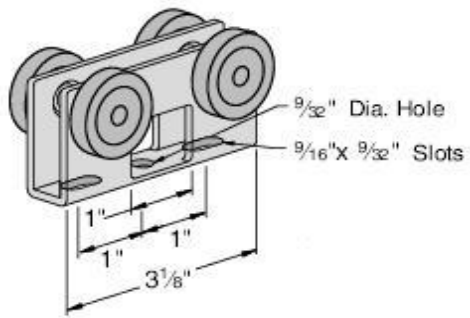
Clevis Material: 12 gauge

Finishing: Electro-Galvanized

Load Rating: 50 lbs

Weight/100 pcs: 21 lbs

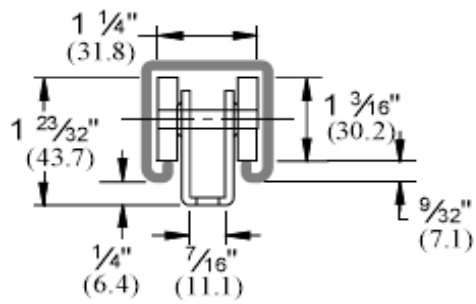
P720 - Two Bearing Light Duty Trolley



Material: Carbon Steel Wheels have stainless steel ball Bearings

Clevis Material: 12 gauge

Finishing: Electro-Galvanized



Load Rating: 100 lbs

Weight/100 pcs: 55 lbs