



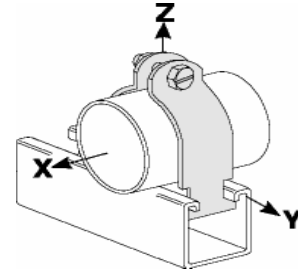
STRUT CLAMPS

I.P. Pipe Clamp

MATERIAL: Low carbon steel

FINISH: Electro-galvanized

ORDERING: Specify figure number and pipe size.



Available in aluminum and stainless steel. Price on request. To order aluminum, add suffix AL to fig. number. To order stainless steel, specify 304 or 316 and add suffix SS to fig. number.

Fig. Number	Pipe Size	O.D. Size	Std. Package	Material Size	Max. Rec. Loads (in Lbs.)			Wt. Each (in Lbs.)
					X	Y	Z	
P2001	$\frac{3}{8}$	•	100	16 Ga.	50	50	400	.10
P2002	$\frac{1}{2}$	•	100	16 Ga.	50	50	400	.10
P2003	$\frac{3}{4}$	•	100	14 Ga.	75	75	600	0.14
P2004	1	•	100	14 Ga.	75	75	600	0.17
P2005	$1\frac{1}{4}$	•	100	14 Ga.	75	75	600	0.21
P2006	$1\frac{1}{2}$	•	50	12 Ga.	125	125	800	.30
P2007	2	$2\frac{3}{8}$	50	12 Ga.	125	125	800	0.35
P2008	$2\frac{1}{2}$	$2\frac{7}{8}$	50	12 Ga.	125	125	800	0.39
P2009	3	$3\frac{1}{2}$	50	12 Ga.	125	125	800	0.46
P2010	$3\frac{1}{2}$	4	50	11 Ga.	150	200	1000	0.65
P2011	4	$4\frac{1}{2}$	25	11 Ga.	150	200	1000	0.66
P2012	5	•	25	11 Ga.	150	200	1000	0.79
P2013	6	$6\frac{5}{8}$	25	11 Ga.	150	200	1000	1.00
P2014	8	$8\frac{5}{8}$	25	11 Ga.	200	250	1000	1.14
P2015	10	$10\frac{3}{4}$	25	11 Ga.	200	250	1000	1.43
P2016	12	$12\frac{3}{4}$	25	11 Ga.	200	250	1000	1.74

Universal Pipe Clamp for EMT, IMC & GRC

MATERIAL: Low carbon steel

FINISH: Electro-galvanized

ORDERING: Specify figure number and nominal size.

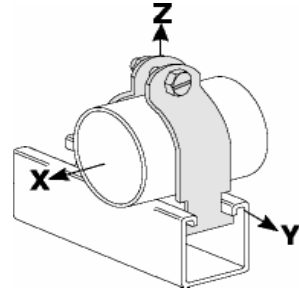


Fig. Number	Nominal Size	O.D. Size Range	Std. Package	Material Size	Max. Rec. Loads (in Lbs.)			Wt. Each (in Lbs.)
					X	Y	Z	
P2101	$\frac{3}{8}$.557 to .706	100	16 Ga.	50	50	400	0.11
P2102	$\frac{1}{2}$.706 to .840	100	16 Ga.	50	50	400	0.11
P2103	$\frac{3}{4}$.922 to 1.050	100	14 Ga.	50	50	400	0.15
P2104	1	1.163 to 1.315	100	14 Ga.	50	50	400	0.17
P2105	$1\frac{1}{4}$	1.510 to 1.660	100	14 Ga.	50	50	400	0.19
P2106	$1\frac{1}{2}$	1.740 to 1.90	50	12 Ga.	75	75	600	.30
P2107	2	2.197 to 2.375	50	12 Ga.	75	75	600	0.35

EMT Conduit Clamp

MATERIAL: Low carbon steel

FINISH: Electro-galvanized

ORDERING: Specify figure number and EMT size.

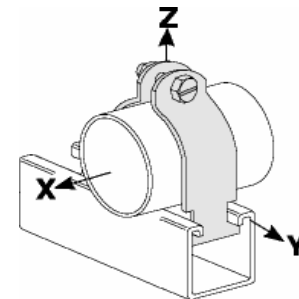


Fig. Number	EMT Size	Std. Package	Material Size	Max. Rec. Loads (in Lbs.)			Wt. Each (in Lbs.)
				X	Y	Z	
P2201	$\frac{3}{8}$	100	16 Ga.	50	50	400	0.09
P2202	$\frac{1}{2}$	100	16 Ga.	50	50	400	0.09
P2203	$\frac{3}{4}$	100	16 Ga.	50	50	400	0.10
P2204	1	100	14 Ga.	50	50	600	0.14
P2205	$1\frac{1}{4}$	100	14 Ga.	50	50	600	0.16
P2206	$1\frac{1}{2}$	50	12 Ga.	75	75	800	0.27
P2207	2	50	12 Ga.	75	75	800	0.30

Copper Tubing Clamp

MATERIAL: Low carbon steel

FINISH: Electro-galvanized

ORDERING: Specify figure number and tube size.

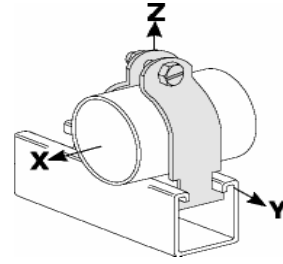


Fig. Number	Tube Size	Std. Package	Material Size	Max. Rec. Loads (in Lbs.)			Wt. Each (in Lbs.)
				X	Y	Z	
P2301	1/4	100	16 Ga.	50	50	400	0.09
P2302	3/8	100	16 Ga.	50	50	400	0.09
P2303	1/2	100	16 Ga.	50	50	400	0.09
P2304	3/4	100	16 Ga.	50	50	400	0.10
P2305	1	100	14 Ga.	75	75	600	0.14
P2306	1 1/4	100	14 Ga.	75	75	600	0.16
P2307	1 1/2	100	14 Ga.	75	75	600	0.17
P2308	2	50	12 Ga.	125	125	800	0.29
P2309	2 1/2	50	12 Ga.	125	125	800	0.35
P2310	3	50	12 Ga.	125	125	800	0.40
P2311	3 1/2	25	12 Ga.	150	200	1000	0.51
P2312	4	25	12 Ga.	150	200	1000	0.61
P2313	5	25	11 Ga.	150	200	1000	0.74
P2314	6	25	11 Ga.	200	250	1000	0.94

Clamp With Cushion

MATERIAL: Low carbon steel, Available 304, 316 Stainless Steel

FINISH: Electro-galvanized

ORDERING: Specify figure number and tube size.

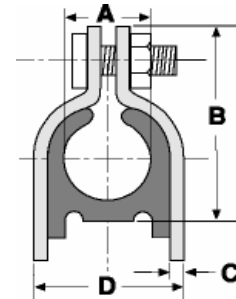


Fig. Number	O.D. Size A	Nom. Tube Size	B	C	D	Std. Package	Wt. Each (in Lbs.)
P2501	1/4	1/8	1 1/16	.060	1/2	30	0.12
P2502	3/8	1/4	1 1/4	.060	5/8	30	0.13
P2503	1/2	3/8	1 3/8	.060	3/4	30	0.13
P2504	5/8	1/2	1 1/2	.060	7/8	20	0.15
P2505	3/4	5/8	1 3/4	0.075	1 1/8	20	0.21
P2506	7/8	3/4	1 7/8	0.075	1 1/4	20	0.22
P2507	1 1/8	1	2 1/16	0.075	1 1/2	10	0.29
P2508	1 3/8	1 1/4	2 7/16	0.075	1 3/4	10	0.33
P2509	1 5/8	1 1/2	3	0.105	2 1/4	10	0.42
P2510	2 1/8	2	3 3/8	0.105	2 3/4	10	0.50
P2511	2 5/8	2 1/2	3 7/8	0.105	3 1/4	10	0.62
P2512	3 1/8	3	4 5/16	0.105	3 3/4	10	0.66
P2514	4 1/8	4	5 1/2	0.125	4 3/4	10	0.88

O.D. Tube Clamp

MATERIAL: Low carbon steel

FINISH: Electro-galvanized

ORDERING: Specify figure number and O.D. tube size.

For use with No-Hub Cast Iron Soil Pipe, Refer Right Table.

Fig. Number	No-Hub Cast Iron Soil
P2406	1 1/2
P2407	2
P2424	3
P2430	4
P2437	5
P2445	6
P2460	8
P2477	10
P2493	12

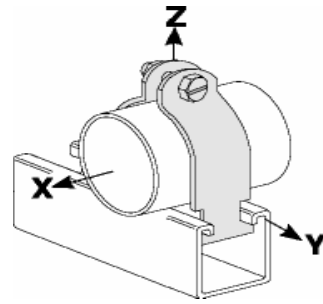


Fig. Number	O.D. Size	Std. Package	Material Size	Max. Rec. Loads (in Lbs.)			Wt. Each (in Lbs.)
				X	Y	Z	
P2401	1/4	100	16 Ga.	50	50	400	0.09
P2402	3/8	100	16 Ga.	50	50	400	0.09
P2403	1/2	100	16 Ga.	50	50	400	0.10
P2404	5/8	100	16 Ga.	50	50	400	0.10
P2405	3/4	100	16 Ga.	50	50	400	0.10
P2406	7/8	100	16 Ga.	50	50	400	0.10
P2407	1	100	14 Ga.	75	75	600	0.13
P2408	1 1/8	100	14 Ga.	75	75	600	0.14
P2409	1 1/4	100	14 Ga.	75	75	600	0.14
P2410	1 3/8	100	14 Ga.	75	75	600	0.16
P2411	1 1/2	100	14 Ga.	75	75	600	0.16
P2412	1 5/8	100	14 Ga.	75	75	600	0.17
P2413	1 3/4	50	12 Ga.	125	125	800	0.27
P2414	1 7/8	50	12 Ga.	125	125	800	0.28
P2415	2	50	12 Ga.	125	125	800	0.28
P2416	2 1/8	50	12 Ga.	125	125	800	0.29
P2417	2 1/4	50	12 Ga.	125	125	800	0.32
P2418	2 1/2	50	12 Ga.	125	125	800	0.34
P2419	2 5/8	50	12 Ga.	125	125	800	0.35
P2420	2 3/4	50	12 Ga.	125	125	800	0.37
P2421	3	50	12 Ga.	125	125	800	0.39
P2422	3 1/8	50	12 Ga.	125	125	800	0.40
P2423	3 1/4	50	12 Ga.	125	125	800	0.42
P2424	3 3/8	50	12 Ga.	125	125	800	0.43
P2425	3 5/8	50	11 Ga.	150	200	1000	0.51
P2426	3 3/4	50	11 Ga.	150	200	1000	0.53
P2427	3 7/8	50	11 Ga.	150	200	1000	0.54
P2428	4 1/8	50	11 Ga.	150	200	1000	0.57
P2429	4 1/4	25	11 Ga.	150	200	1000	0.59
P2430	4 3/8	25	11 Ga.	150	200	1000	0.60
P2431	4 5/8	25	11 Ga.	150	200	1000	0.62
P2432	4 3/4	25	11 Ga.	150	200	1000	0.64
P2433	4 7/8	25	11 Ga.	150	200	1000	0.65
P2434	5	25	11 Ga.	150	200	1000	0.67
P2435	5 1/8	25	11 Ga.	150	200	1000	0.68