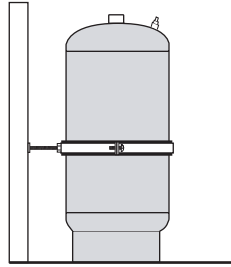
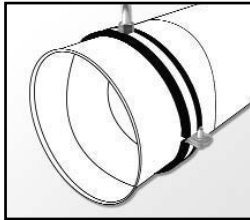


# SPIRAL DUCT CLAMPS



- Secure spiral ducts up to 24" with 3/8" threaded rod
- Two piece design with 2 lock bolts that allow adjustment to accommodate varying pipe sizes
- Rubber vibration control lining reduces noise and resists corrosion
- The special design of the rubber lining and clamp effectively prevents the lining from slipping out
- Mount 360° vertically or horizontally
- Load capacity: 4" to 14" - 112 lbs. 16" to 24" - 270 lbs.
- Perfect for use with hot water heaters and expansion tanks



Item #	SIZE	Item #	SIZE
25-40-154	4"	25-40-161	12"
25-40-155	5"	25-40-162	14"
25-40-156	6"	25-40-163	16"
25-40-157	7"	25-40-164	18"
25-40-158	8"	25-40-165	20"
25-40-159	9"	25-40-166	22"
25-40-160	10"	25-40-167	24"