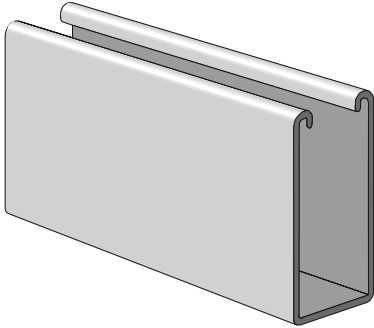
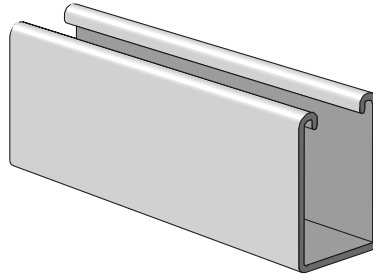


# STRUT CHANNELS STYLES

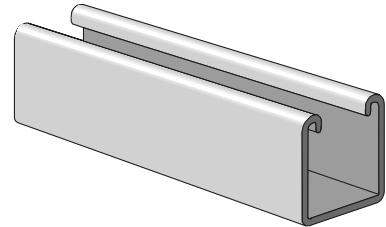
■ PS 100  $1\frac{5}{8}'' \times 3\frac{1}{4}'' \times 12$  ga.  
(see page 5)



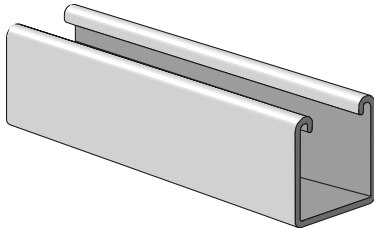
■ PS 150  $1\frac{5}{8}'' \times 2\frac{7}{16}'' \times 12$  ga.  
(see page 5)



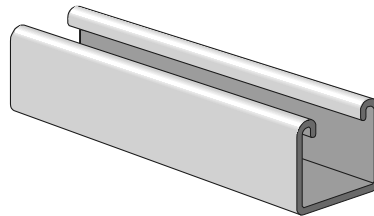
■ PS 200  $1\frac{5}{8}'' \times 1\frac{5}{8}'' \times 12$  ga.  
(see page 6)



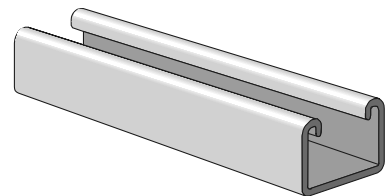
■ PS 210  $1\frac{5}{8}'' \times 1\frac{5}{8}'' \times 14$  ga.  
(see page 9)



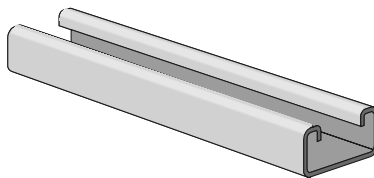
■ PS 300  $1\frac{5}{8}'' \times 1\frac{3}{8}'' \times 12$  ga.  
(see page 9)



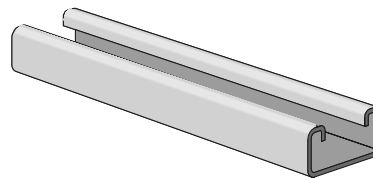
■ PS 400  $1\frac{5}{8}'' \times 1'' \times 12$  ga.  
(see page 10)



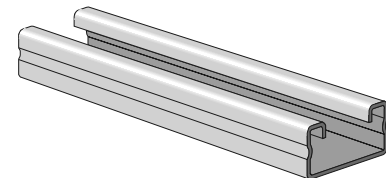
■ PS 500  $1\frac{5}{8}'' \times 1\frac{3}{16}'' \times 14$  ga.  
(see page 11)



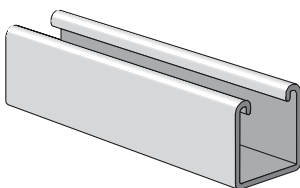
■ PS 520  $1\frac{5}{8}'' \times 1\frac{3}{16}'' \times 12$  ga.  
(see page 11)



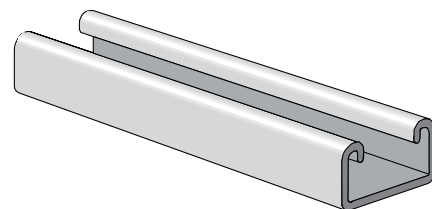
■ PS 560  $1\frac{5}{8}'' \times 1\frac{3}{16}'' \times 16$  ga.  
(see page 12)



■ PS 600J  $1\frac{3}{16}'' \times 1\frac{3}{16}'' \times 19$  ga.

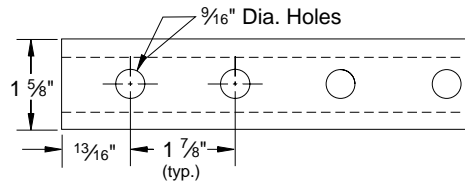
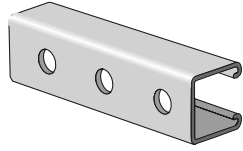


■ PS 700J  $1\frac{3}{16}'' \times 1\frac{3}{32}'' \times 19$  ga.

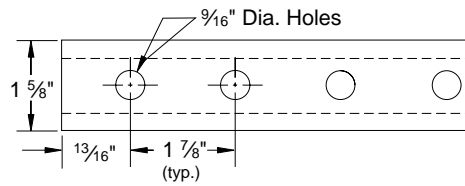
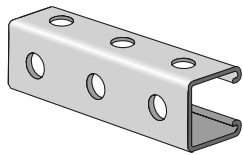


# MULTIPLE HOLES ON STRUT CHANNELS

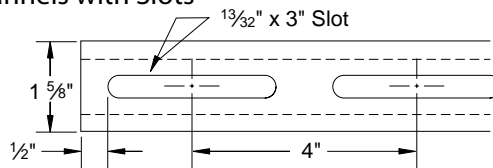
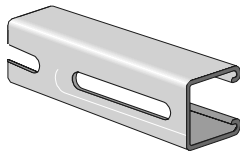
**Hole Style Code: RH - Channels with Round Holes**



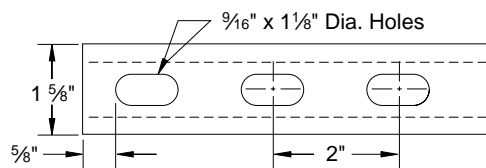
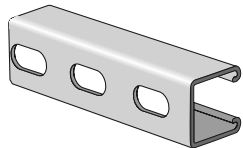
**Hole Style Code RH3 - Channels with Round Holes on Three Sides**



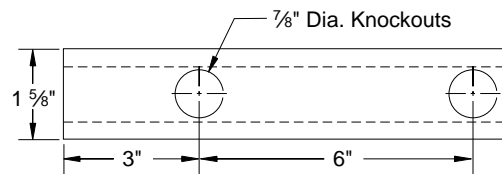
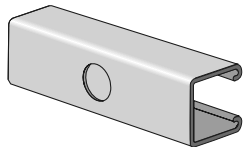
**Hole Style Code: ST - Channels with Slots**



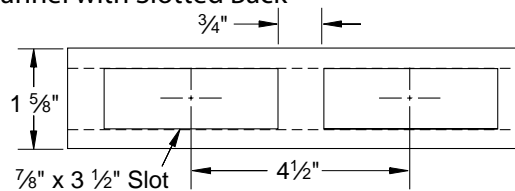
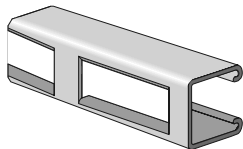
**Hole Style Code: EH - Channel with Elongated Holes**



**Hole Style Code: KH - Channel with Knockouts**

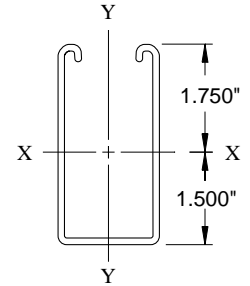
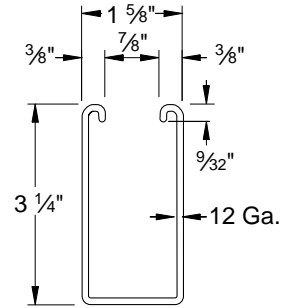
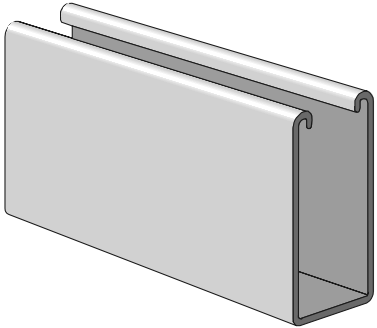


**Hole Style Code: SB - Channel with Slotted Back**

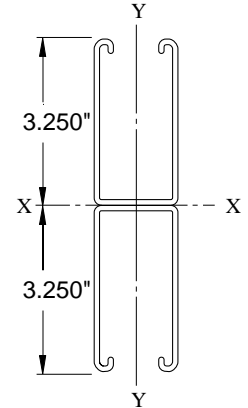
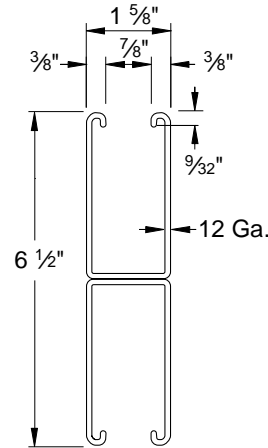
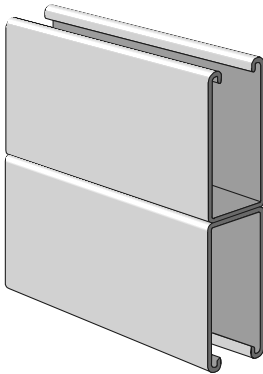


# DETAIL DIMENSIONS OF STRUT CHANNELS

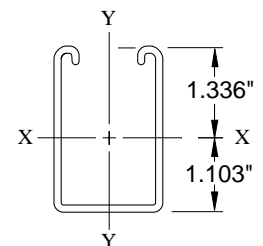
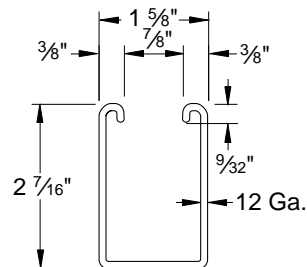
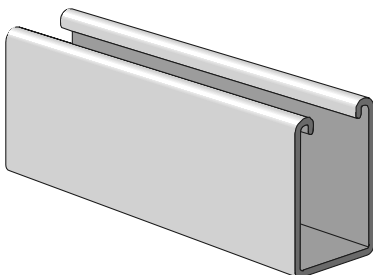
■ PS 100 – Steel Channel (1 <sup>5</sup>/<sub>8</sub>" x 3 <sup>1</sup>/<sub>4</sub>" x 12 ga.)



■ PS 100 2T3 – Steel Channel (1 <sup>5</sup>/<sub>8</sub>" x 6 <sup>1</sup>/<sub>2</sub>" x 12 ga.)

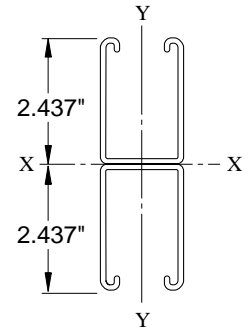
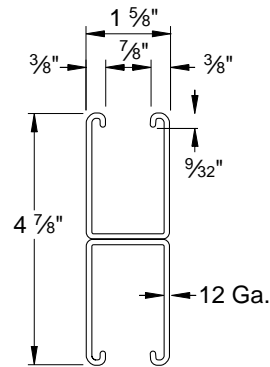
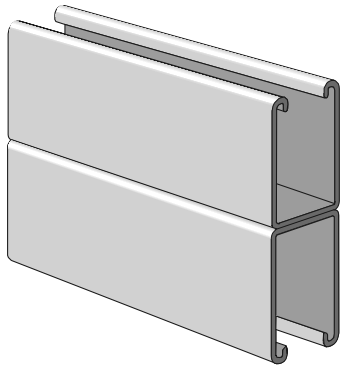


■ PS 150 – Steel Channel (1 <sup>5</sup>/<sub>8</sub>" x 2 <sup>7</sup>/<sub>16</sub>" x 12 ga.)

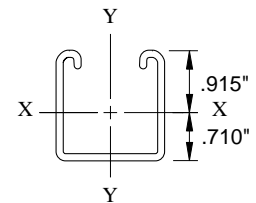
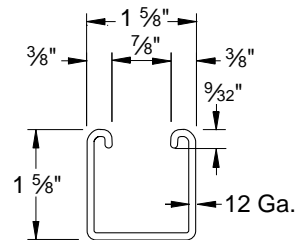
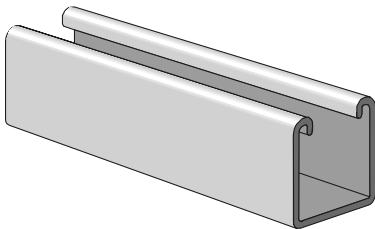


## DETAIL DIMENSIONS OF STRUT CHANNELS

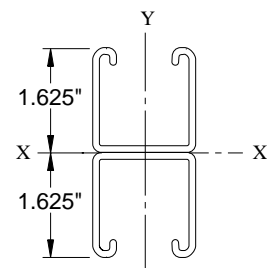
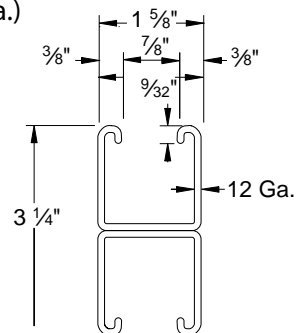
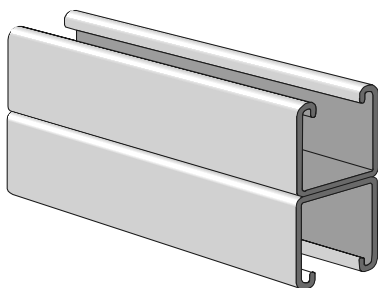
PS 150 2T3 – Steel Channel (1  $\frac{5}{8}$ " x 4  $\frac{7}{8}$ " x 12 ga.)



PS 200 – Steel Channel (1  $\frac{5}{8}$ " x 1  $\frac{5}{8}$ " x 12 ga.)

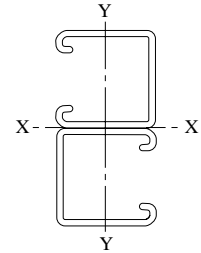
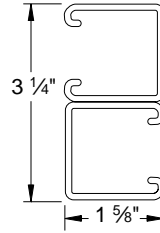
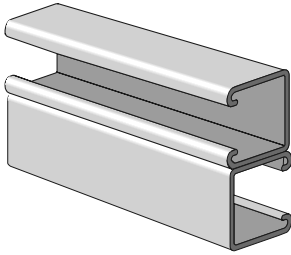


PS 200 2T3 – Steel Channel (1  $\frac{5}{8}$ " x 3  $\frac{1}{4}$ " x 12 ga.)

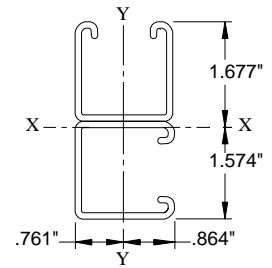
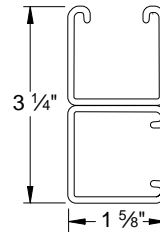
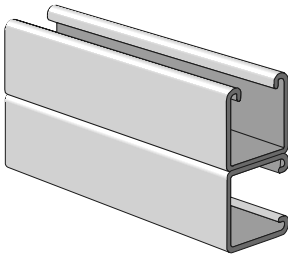


# DETAIL DIMENSIONS OF STRUT CHANNELS

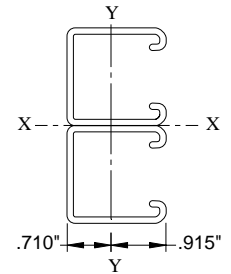
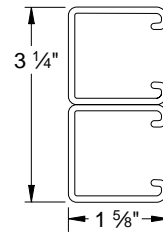
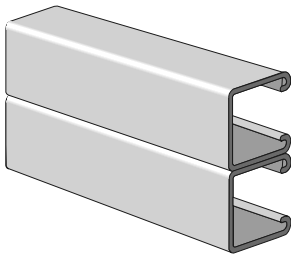
PS 200 2T2 – Welded Steel Channel (1  $\frac{5}{8}$ " x 3  $\frac{1}{4}$ " x 12 ga.)



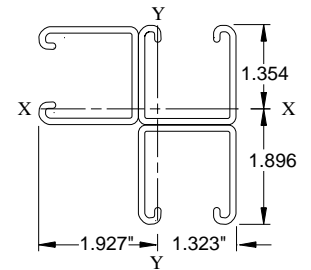
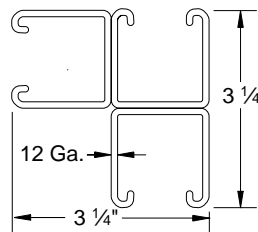
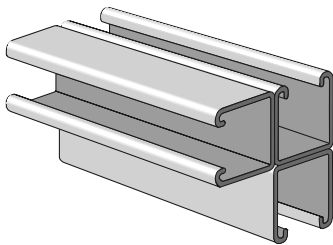
PS 200 2T4 – Welded Steel Channel (1  $\frac{5}{8}$ " x 3  $\frac{1}{4}$ " x 12 ga.)



PS 200 2T5 – Welded Steel Channel (1  $\frac{5}{8}$ " x 3  $\frac{1}{4}$ " x 12 ga.)

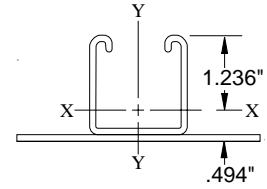
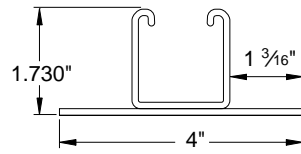
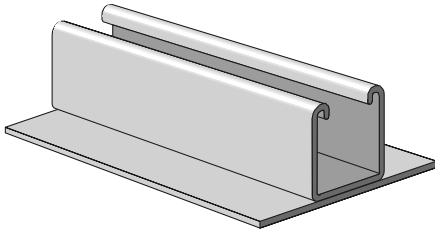


PS 200 3T6 – Welded Steel Channel (3  $\frac{1}{4}$ " x 3  $\frac{1}{4}$ " x 12 ga.)

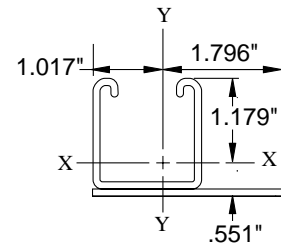
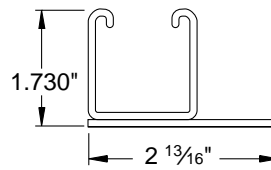
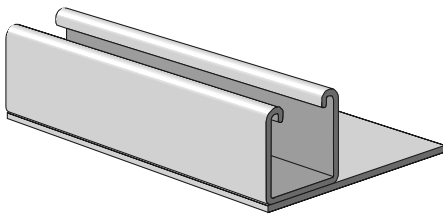


# DETAIL DIMENSIONS OF STRUT CHANNELS

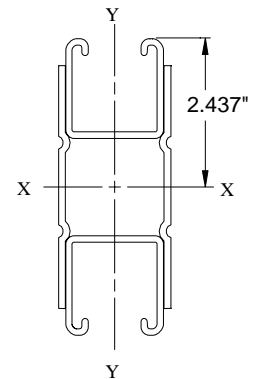
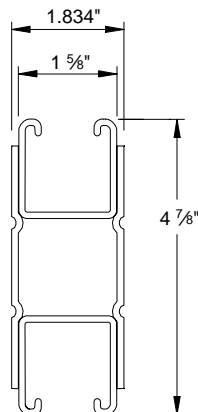
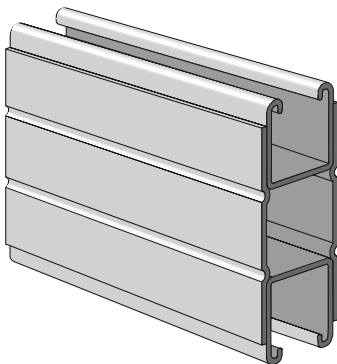
PS 200 PLA – Welded Steel Channel and Plate



PS 200 PLB – Welded Steel Channel and Plate

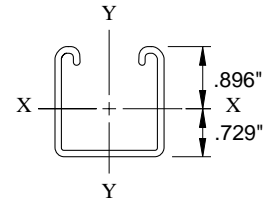
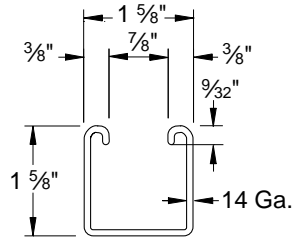
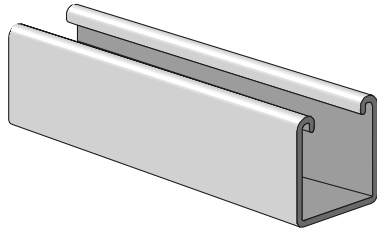


PS 200 PLC – Welded Steel Channel and Plate

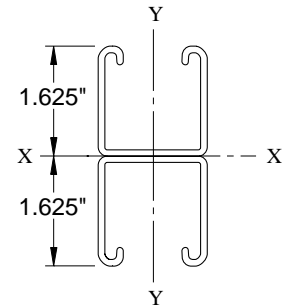
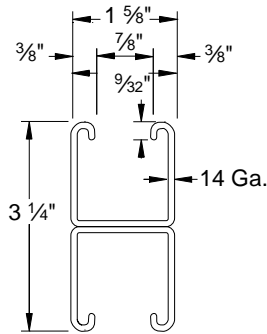
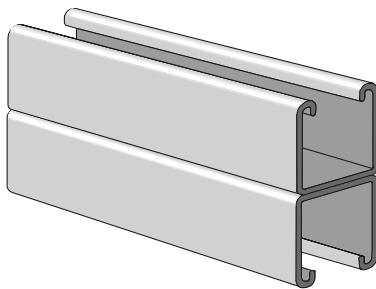


# DETAIL DIMENSIONS OF STRUT CHANNELS

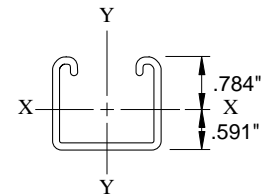
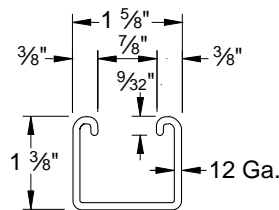
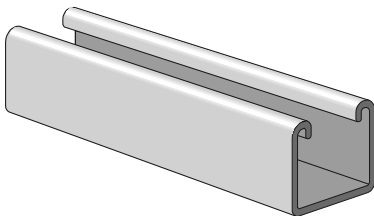
PS 210 – Steel Channel (1 5/8" x 1 5/8" x 14 ga.)



PS 210 2T3 – Steel Channel (1 5/8" x 3 1/4" x 14 ga.)

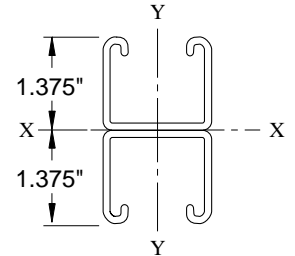
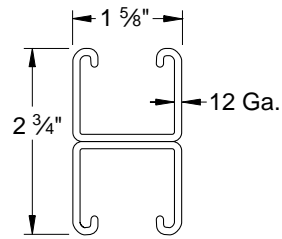
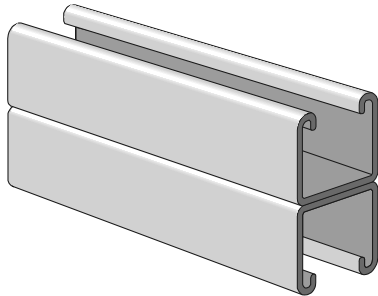


PS 300 – Steel Channel (1 5/8" x 1 3/8" x 12 ga.)



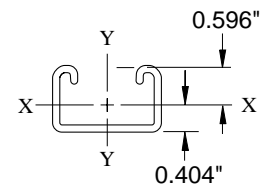
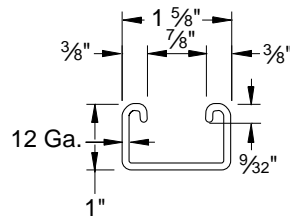
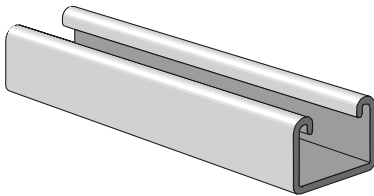
## DETAIL DIMENSIONS OF STRUT CHANNELS

PS 300 2T3 – Steel Channel (1 <sup>5</sup>/<sub>8</sub>" x 2 <sup>3</sup>/<sub>4</sub>" x 12 ga.)

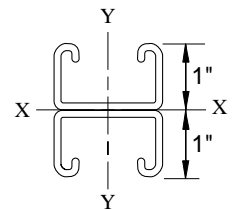
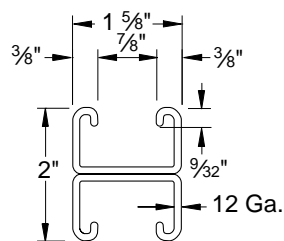
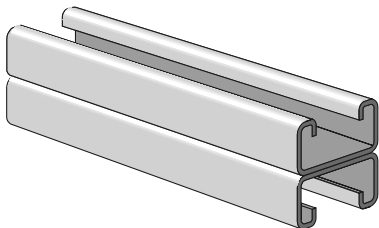


2

PS 400 – Steel Channel (1 <sup>5</sup>/<sub>8</sub>" x 1" x 12 ga.)

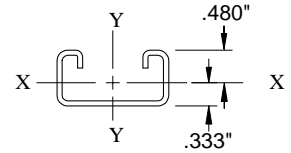
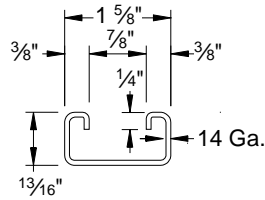
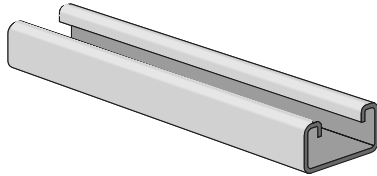


PS 400 2T3 – Steel Channel (1 <sup>5</sup>/<sub>8</sub>" x 2" x 12 ga.)

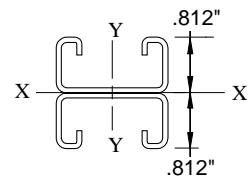
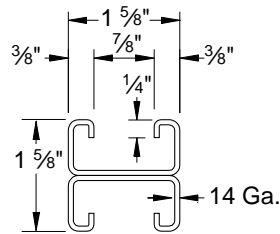
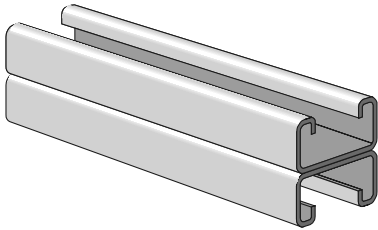


# DETAIL DIMENSIONS OF STRUT CHANNELS

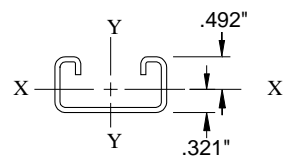
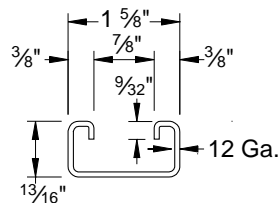
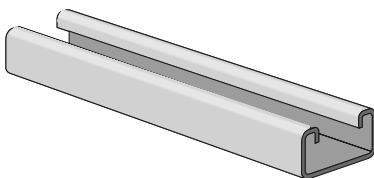
■ PS 500 – Steel Channel (1  $\frac{5}{8}$ " x  $\frac{13}{16}$ " x 14 ga.)



■ PS 500 2T3 – Steel Channel (1  $\frac{5}{8}$ " x 1  $\frac{5}{8}$ " x 14 ga.)

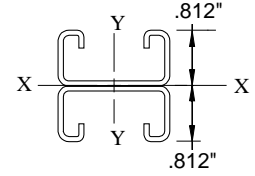
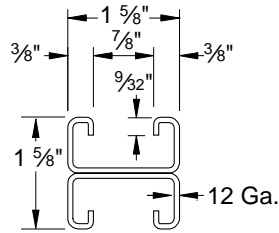
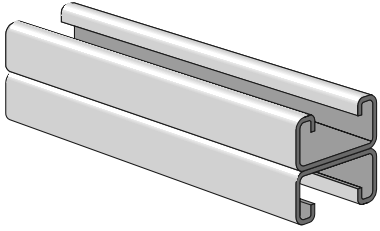


■ PS 520 – Steel Channel (1  $\frac{5}{8}$ " x  $\frac{13}{16}$ " x 12 ga.)

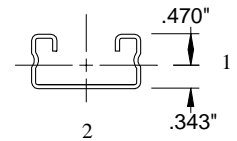
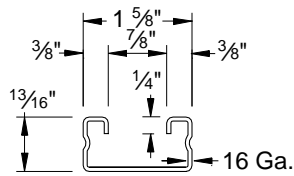
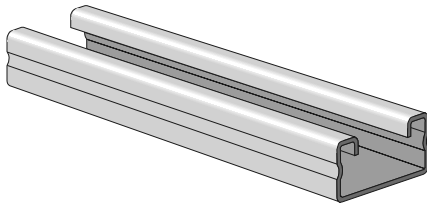


# DETAIL DIMENSIONS OF STRUT CHANNELS

PS 520 2T3 – Steel Channel (1 5/8" x 1 5/8" x 12 ga.)



PS 560 – Steel Channel (1 5/8" x 13/16" x 16 ga.)



PS 560 2T3 – Steel Channel (1 5/8" x 1 5/8" x 16 ga.)

