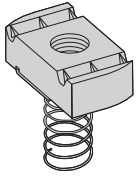
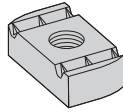


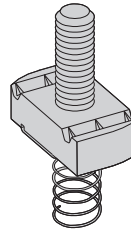
CHANNELNUTS & HARDWARE



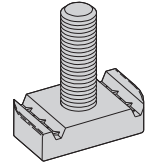
SPRING NUT



NUT WITHOUT SPRING

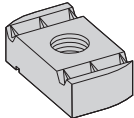


STUD NUT WITH SPRING



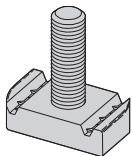
STUD NUT WITHOUT SPRING

NUT WITHOUT SPRING



Part No.	Thread Size	Nut Thickness		Wt./C	
				Lbs.	kg
P221WO	#8-32	1/4"	(6.3)	7.0	(3.17)
P227WO	#10-32	1/4"	(6.3)	7.0	(3.17)
P222WO	#10-24	1/4"	(6.3)	7.0	(3.17)
P224WO	1/4-20	1/4"	(6.3)	6.7	(3.04)
P223WO	5/16-18	1/4"	(6.3)	6.7	(3.04)
P228WO	3/8-16	3/8"	(9.5)	9.3	(4.22)
P226WO	7/16-14	3/8"	(9.5)	8.8	(3.99)
P225WO	1/2-13	1/2"	(12.7)	11.6	(5.26)
P525WO	1/2-13	3/8"	(9.5)	8.8	(3.99)
P255WO	5/8-11	1/2"	(12.7)	16.4	(7.44)
P555WO	5/8-11	3/8"	(9.5)	10.2	(4.62)
P275WO	3/4	1/2"	(12.7)	14.5	(6.58)
P575WO	3/4-10	3/8"	(9.5)	8.8	(3.99)
P278WO	7/8-9	1/2"	(12.7)	12.5	(5.67)

STUD NUT WITHOUT SPRING

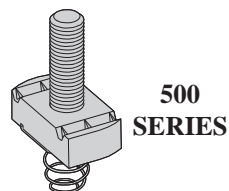
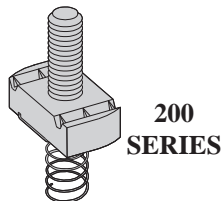
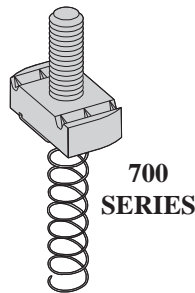
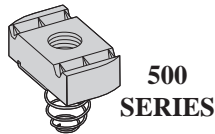
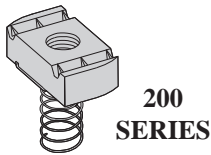
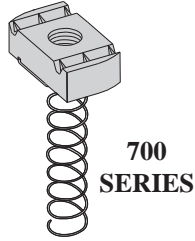


Part No.	Thread Siz	Nut Thickness		Ave. Wt./C	
				Lbs.	kg
PN224-*WO	1/4-20	1/4"	(6.3)	8.1	(3.66)
PN228-*WO	3/8-16	3/8"	(9.5)	12.9	(5.85)
PN225-*WO	1/2-13	1/2"	(12.7)	18.2	(8.23)
PN525-*WO	1/2-13	3/8"	(9.5)	15.4	(6.96)

*Note: Add stud length in inches (3/4, 1, 1 1/4, 1 1/2)

CHANNEL NUTS & HARDWARE

SPRING NUT



Part No.	Thread Size	Nut Thickness		Wt./C	
				Lbs.	kg
P721	#8-32	1/4"	(6.3)	7.0	(3.17)
P221	#8-32	1/4"	(6.3)	7.0	(3.17)
P521	#8-32	1/4"	(6.3)	7.0	(3.17)
P727	#10-32	1/4"	(6.3)	7.0	(3.17)
P227	#10-32	1/4"	(6.3)	7.0	(3.17)
P527	#10-32	1/4"	(6.3)	7.0	(3.17)
P722	#10-24	1/4"	(6.3)	7.0	(3.17)
P222	#10-24	1/4"	(6.3)	7.0	(3.17)
P522	#10-24	1/4"	(6.3)	7.0	(3.17)
P724	1/4-20	1/4"	(6.3)	6.7	(3.04)
P224	1/4-20	1/4"	(6.3)	6.7	(3.04)
P524	1/4-20	1/4"	(6.3)	6.7	(3.04)
P723	5/16-18	1/4"	(6.3)	6.7	(3.04)
P223	5/16-18	1/4"	(6.3)	6.7	(3.04)
P523	5/16-18	1/4"	(6.3)	6.7	(3.04)
P728	3/8-16	3/8"	(9.5)	9.3	(4.22)
P228	3/8-16	3/8"	(9.5)	9.3	(4.22)
P528	3/8-16	3/8"	(9.5)	9.3	(4.22)
P726	7/16-14	3/8"	(9.5)	8.8	(3.99)
P226	7/16-14	3/8"	(9.5)	8.8	(3.99)
P526	7/16-14	3/8"	(9.5)	8.8	(3.99)
P725	1/2-13	1/2"	(12.7)	11.6	(5.26)
P225	1/2-13	1/2"	(12.7)	11.6	(5.26)
P525	1/2-13	3/8"	(9.5)	8.8	(3.99)
P755	5/8-11	1/2"	(12.7)	16.4	(7.44)
P255	5/8-11	1/2"	(12.7)	16.4	(7.44)
P555	5/8-11	3/8"	(9.5)	10.2	(4.62)
P775	3/4-10	1/2"	(12.7)	14.5	(6.58)
P275	3/4-10	1/2"	(12.7)	14.5	(6.58)
P575	3/4-10	3/8"	(9.5)	8.8	(3.99)
P778	7/8-9	1/2"	(12.7)	12.5	(5.67)
P278	7/8-9	1/2"	(12.7)	12.5	(5.67)

STUD NUT WITH SPRING

Part No.	Thread Size	Nut Thickness		Ave. Wt./C	
				Lbs.	kg
PN724-*	1/4-20	1/4"	(6.3)	8.1	(3.66)
PN224-*	1/4-20	1/4"	(6.3)	8.1	(3.66)
PN524-*	1/4-20	1/4"	(6.3)	8.1	(3.66)
PN728-*	3/8-16	3/8"	(9.5)	12.9	(5.85)
PN228-*	3/8-16	3/8"	(9.5)	12.9	(5.85)
PN528-*	3/8-16	3/8"	(9.5)	12.9	(5.85)
PN725-*	1/2-13	1/2"	(12.7)	18.2	(8.23)
PN225-*	1/2-13	1/2"	(12.7)	18.2	(8.23)
PN525-*	1/2-13	3/8"	(9.5)	15.4	(6.96)

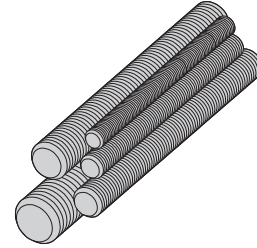
*Note: Add stud length in inches (3/4, 1, 1 1/4, 1 1/2)

CHANNEL NUTS & HARDWARE

ATR ALL THREADED ROD

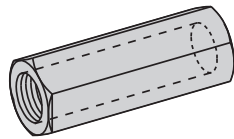
- Available in 36", 72", 120", 144" lengths
- Standard finish: Zinc-Plated, Stainless Steel Type 304

Part No. & Size	Threads Per Inch	Recommended Load		Wt./C Ft. (3048.0 cm)	
		Lbs.	kN	Lbs.	kg
ATR 1/4"	20	240	(1.07)	12	(5.44)
ATR 5/16"	18	400	(1.78)	19	(8.62)
ATR 3/8"	16	730	(3.24)	29	(13.15)
ATR 1/2"	13	1350	(6.00)	53	(24.04)
ATR 5/8"	11	2160	(9.60)	89	(40.37)
ATR 3/4"	10	3230	(14.37)	123	(55.79)
ATR 7/8"	9	4480	(19.93)	170	(77.11)
ATR 1"	8	5900	(26.24)	225	(102.06)

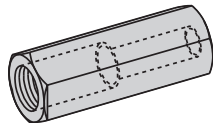


P655 ROD COUPLING P656 REDUCER ROD COUPLING

- Load rating for each coupler meets All Threaded Rod value
- Standard finish: Zinc-Plated, Stainless Steel Type 304



Part No.	Size	Recommended Load		Length		Wt./C	
		Lbs.	kN	Lbs.	kg	Lbs.	kg
P655-1/4	1/4"-20	240	(1.07)	7/8"	(22.2)	1.9	(.86)
P655-5/16	5/16"-18	380	(1.69)	7/8"	(22.2)	1.8	(.81)
P655-3/8	3/8"-16	730	(3.24)	1 1/8"	(28.6)	3.6	(1.63)
P655-1/2	1/2"-13	1350	(6.00)	1 3/4"	(44.4)	11.3	(5.12)
P655-5/8	5/8"-11	1810	(8.05)	2 1/8"	(54.0)	17.6	(7.98)
P655-3/4	3/4"-10	2710	(12.05)	2 1/4"	(57.1)	28.1	(12.74)
P655-7/8	7/8"-9	3770	(16.77)	2 1/2"	(63.5)	57.2	(25.94)
P655-1	1"-8	4960	(22.06)	2 3/4"	(69.8)	73.7	(33.43)



Part No.	Size	Recommended Load		Length		Wt./C	
		Lbs.	kN	Lbs.	kg	Lbs.	kg
P656-3/8 x 1/4	3/8"-16 & 1/4"-20	240	(1.07)	1"	(25.4)	3.7	(1.68)
P656-1/2 x 3/8	1/2"-13 & 3/8"-16	610	(2.71)	1 1/4"	(31.7)	6.6	(2.99)
P656-5/8 x 1/2	5/8"-11 & 1/2"-13	1130	(5.02)	1 1/4"	(31.7)	11.6	(5.26)
P656-3/4 x 5/8	3/4"-10 & 5/8"-11	1810	(8.05)	1 1/2"	(38.1)	20.6	(9.34)
P656-7/8 x 3/4	7/8"-9 & 3/4"-10	2710	(12.05)	1 3/4"	(44.4)	39.4	(17.87)